



Message from the Statewide OHV Program Coordinator



Jeff Prince is the Statewide OHV Program Coordinator at Arizona State Parks. He is a licensed landscape architect and native to Arizona. Jeff enjoys exploring the Arizona backcountry with his 4x4, motorcycle, mountain bike, kayak, and hiking boots. Some of his more interesting OHV adventures have included a East/West traverse of the border with Mexico and a North/South traverse starting on the Camino del Diablo and ending at the Grand Canyon.

Happy New Year! I hope everyone reading this has had a pleasant holiday season. My wife and I were fortunate to spend some time exploring the low desert areas near Alamo Lake just before Christmas. If you haven't been out that way, winter and spring are an excellent time to get out and enjoy the trails surrounding our state park at [Alamo Lake](#). For those with toy haulers or seeking improved campgrounds, Alamo has you covered. The geology and wildlife in the area are inspiring, just watch out for the wild burros who seem to enjoy crossing the road as much as we enjoy exploring the trails.

I'm the new guy at Arizona State Parks, heading up our statewide [OHV Program](#). Since taking the job back in October, I have traveled the state to gather public input, work with our partner agencies, and inspect some of the [OHV projects Arizona State Parks has funded](#) over the years. In the coming months, I will be sharing the accomplishments of our program, identifying ways you can get involved with OHV recreation, and launching a number of new programs to improve OHV recreation opportunities. Fasten your seat belts or secure that chin strap because you are in for an exciting ride this year!

One of the things I knew before taking this job is that many OHV users find it difficult to make it to public meetings like the ones we had back in November. Typically, they are held during the week right after work due to the various parties who need to attend (agency personnel, stakeholders, interested members of the public). In order to get more trail user input, I have created the **Trail Talk Program**. I hope you will join us for the first one, which is covered a little later in this message. We will be taking the show on the road in the coming months, moving around the state with the riding season, so keep an eye on our newsletter.

Finally, if you want to make a positive contribution to OHV recreation here in the great state of Arizona, please get involved! I'll be happy to have your support and show you the many opportunities available for you to make a difference. Please encourage your friends and club members to [sign up for this newsletter](#) to stay informed about what the statewide OHV Program at Arizona State Parks is up to.

Happy trails,

Jeff Prince
jprince@azstateparks.gov

EVENT - Trail Talk - January 12, 2013

The purpose of the new Arizona State Park Trail Talk program is to get our motorized public connected to the various agencies and people who have a stake in OHV recreation while promoting riding opportunities funded by the Arizona State Parks Statewide OHV Fund.

Trail Talk #1 - January 12, 2013 at 9:00am

Table Mesa Road / Little Pan OHV Staging and Camping Area

Tom Bickauskas with BLM and Jeff Prince with AZ State Parks will host a trail talk to explain more about the area, how it relates to the Arizona State Parks OHV program, and to hear from you and answer all those questions you've never asked a government person.

[Click here for a map of the route](#)



Directions to the staging area:

- 1) Exit I-17 north at Table Mesa Rd exit (236).
Table Mesa Rd is the next exit north of New River Rd.
- 2) Proceed to west side of I-17 & follow the paved frontage road going north (BLM 9997).
- 3) At the end of the pavement, set your odometer & continue about 1.1 miles, stay right.
Do not take any left turns or you'll go to a gravel pit.
- 4) You'll come to a chain link fenced area with large gas line valves on your left.
Turn right at the next fork in the road. This is the start of AZCo Mine Rd (BLM 9999).
- 5) Continue on RD 9999 for about 0.7mi & turn left onto Little Pan Mine Rd (BLM 9998).
This road has an improved surface, so it is easy to recognize.
- 6) Go northwest 1 mile to Little Pan Staging area.
Bear right just after the cattle guard to enter the staging area.
- 7) The talk will commence near the bathroom and two panel kiosk board.

Look for bright colored signs at intersections.

Featured Partner - Bureau of Land Management



Tom Bickauskas works at the Phoenix District of the BLM on OHV recreation and travel management. Prior to government work, he was a manufacturing engineer at Titan Motorcycle Company in Arizona and Honda of America in Ohio. In his free time, you'll catch him doing some hobby machining and fabrication on his two-wheeled obsessions which include a 10 foot long chopper bicycle named Madness and (nearly vintage) Suzuki DR350ES, aka "claw hammer."

Who is the BLM?

The Bureau of Land Management, Phoenix District, a federal land management agency under the Department of Interior, provides approximately 50% of the riding and four-wheeling opportunities near Phoenix. Most of the BLM public lands are northwest and southwest of Phoenix. The lands are intermingled with Arizona State Trust Land and private land.

The mission of the BLM is to sustain the health, diversity, and productivity of the public lands for the use and enjoyment of present and future generations. The BLM manages 245 million acres nationwide, more than any other government agency. In Arizona, 12 million acres are home to 37,000 miles of roads and trails. These were mapped during a statewide mapping project. Surrounding Phoenix, these lands are managed by the BLM staff, which number approximately 75 people for 2.4 million acres. Of this 75, approximately 3-5 people will be working on a recreation project or monitoring at a given time.

What does the BLM do to manage trails?

The popularity and close proximity of BLM managed lands to Phoenix and other nearby towns makes it difficult to provide the visitor services and trail conditions many people expect. When trails are lightly used, little management is needed. Management, in BLM terms, is providing engineering, education and enforcement in the proper amounts to offer enjoyable, cost effective and environmentally sustainable trail riding opportunities. We call it the 3Es. As use increases, trail maintenance and correction of trail design flaws becomes necessary.

How can riders like me help out?

Since 2010, the Arizona State Parks Statewide OHV Fund has helped the BLM tremendously in establishing a program for visitor services and trail maintenance. The BLM staff isn't getting bigger, it's actually shrinking, so we're seeking out ways to improve our effectiveness. That's where Arizona State Parks and [non-profit/volunteer groups](#) come in. With assistance, BLM can meet its mission. We've put your OHV funds to work on BLM lands near Phoenix and are receiving help in the form of funding and partnerships. Paying your OHV decal is making a difference.



Two panel kiosk at the new Little Pan OHV staging and camping area (Statewide OHV Fund project)

Where are OHV funds being used?

The Table Mesa Recreation Area, north of Anthem/New River, on the west side of Interstate 17 is the first area to receive the 3Es. The work to connect and maintain trails is the result of finishing the travel management plan. Without this planning done on the front end, your money would not be able to reach its highest potential. Actions would be random and reactionary to problems. At Table Mesa Rec. Area, we are creating a system of loop trails accessible from a common staging area. The area is free to use and will be into the foreseeable future due, in part, to the availability of OHV grants. BLM has partnered with the Arizona Off-Highway Vehicle Coalition, a 501c3 corporation to get grants and do the work. The AZOHVC is committed to assisting BLM to implement travel management plans and improving conditions for riders.

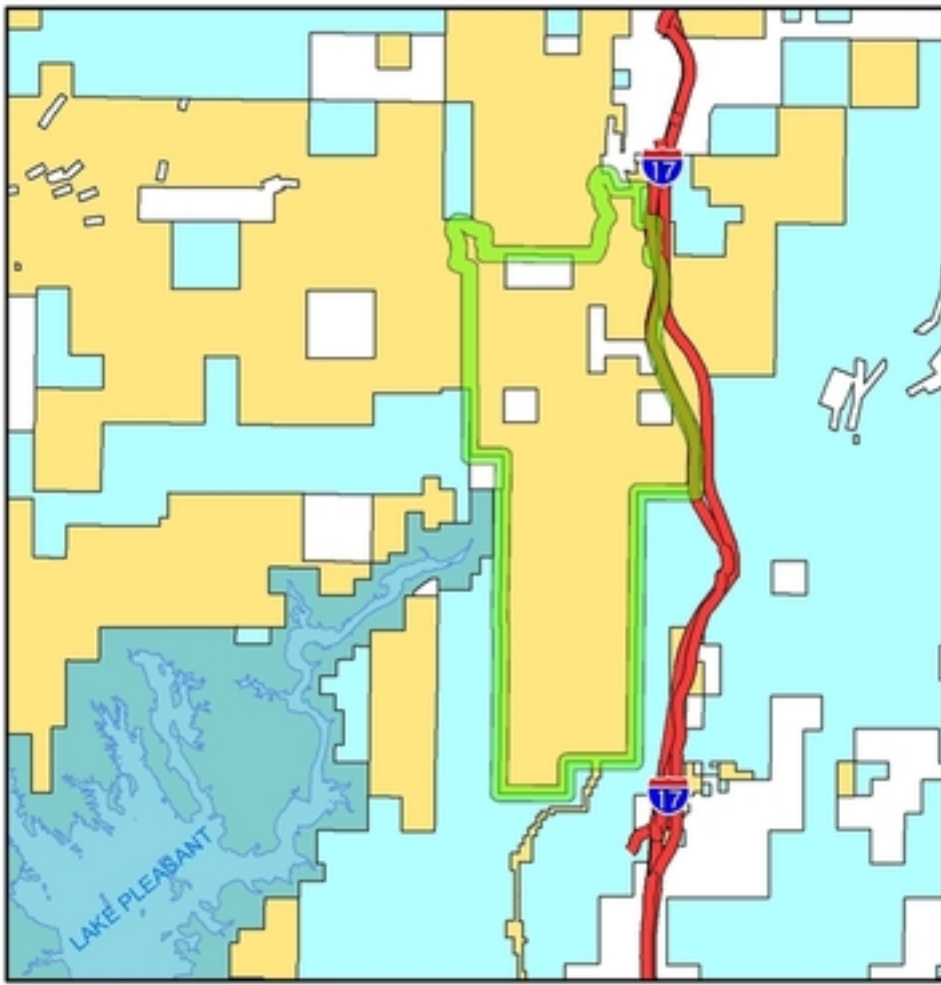


Table Mesa Recreation Area (green border)



Arizona State Parks
AZStateParks.com/OHV